

ETC® Release Note

SmartFade® Software



Product Line:

SmartFade

Description:

Version 3.0.2 Software

SmartFade Components

SmartFade embedded software	3.0.2.9.0.43
SmartFade Software Utility	1.0.0

Engineering Change Order (ECO):

500008988

Effective Date:

2011-12-06

Purpose

The purpose of this release is to correct issues found in previous versions of software. For any questions relating to the contents of this release or the behavior of this software, please contact ETC Technical Services at the office nearest you. A list of ETC offices is given at the bottom of this page.

Availability

This software is currently available in new shipping units and via software download from the ETC website.

Documentation

Current documentation includes the *SmartFade Two-Scene Quick Guide* and the *SmartFade v3.0.1 User Manual*. Please keep this release note with your user manual for descriptions of the newest features, changes and bug fixes in the SmartFade software. ETC manuals can be downloaded free of charge from ETC's website at www.etcconnect.com. They are available in portable document format (pdf), and are viewable with Adobe® Acrobat® Reader™ v8.x and later.

Compatibility

- SmartFade is compatible with all DMX512 1990 and DMX512 ANSI E1.11 compliant devices.
- Users of SmartFade who also use SmartSoft must update both installations.
- SmartFade v3.0.2 software is compatible with SmartSoft as installed with the v3.0.2 installation package. Users of SmartSoft will need to update both the console and the SmartSoft installation on their computer.

Key Enhancements in v3.0.2

- Bug fix

Key Enhancements in v3.0.1

- Support for SDHC memory cards for show file storage.

Important Note regarding use of SDHC cards and SmartFade:

- SDHC cards are only usable for show file storage. For best performance we recommend keeping active show files in the root directory of the card, and all other files in folders on that card. Show file names should be kept to 8 characters or less to ensure that they can be viewed properly on the SmartFade LCD display.
- SDHC cards cannot be used to update the software on a SmartFade or SmartFade ML



Corporate Headquarters ■ 3031 Pleasant View Road, P.O. Box 620979, Middleton, Wisconsin 53562-0979 USA ■ Tel +608 831 4116 ■ Fax +608 836 1736
London, UK ■ Unit 26-28, Victoria Industrial Estate, Victoria Road, London W3 6UU, UK ■ Tel +44 (0)20 8896 1000 ■ Fax +44 (0)20 8896 2000
Rome, IT ■ Via Pieve Torina, 48, 00156 Rome, Italy ■ Tel +39 (06) 32 111 683 ■ Fax +44 (0) 20 8752 8486
Holzkirchen, DE ■ Ohmstrasse 3, 83607 Holzkirchen, Germany ■ Tel +49 (80 24) 47 00-0 ■ Fax +49 (80 24) 47 00-3 00
Hong Kong ■ Rm 1801, 18/F, Tower I Phase 1 Enterprise Square, 9 Sheung Yuet Road, Kowloon Bay, Kowloon, Hong Kong ■ Tel +852 2799 1220 ■ Fax +852 2799 9325
Service: (Americas) service@etcconnect.com ■ (UK) service@etcconnect.com ■ (DE) techserv-hoki@etcconnect.com ■ (Asia) service@etcconnect.com
Web: www.etcconnect.com ■ OSF 4.1.9.1 ■ Copyright © 2011 ETC. All Rights Reserved. ■ Product information and specifications subject to change.
7219M1100-3.0.2 ■ Rev A ■ Released 2011-12 ■ ETC intends this document to be provided in its entirety.

ETC Release Note:

SmartFade v3.0.2 Software

console. Only standard SD cards or connection to a PC using USB can be used to update the software.

Key Enhancements in v3.0.0

- Stack cues may now be recorded in any numerical order and they will play back in correct numerical sequence. Cues may be numbered from 1 to 199 and point cues may be inserted anywhere from 0.1 to 199.9. The total number of cues remains fixed at 199.
- Stack editing has been simplified. Now there is one type of edit for any step number.
- The consoles are now set to default on to General MIDI and interconnect immediately.

Software Installation

These are the instructions for updating the software in your SmartFade console. There are two ways of updating the software.

- Using a standard **SD** card (not an SDHC card)
- Connecting with **USB** to a **PC**

Software can be downloaded from the ETC Web site: www.etcconnect.com

Please make sure to download the correct software for your console - **SmartFade** and **SmartFade** use different software.



CAUTION:

Make sure to back up any show data you want to keep to the SD card before proceeding with a software upgrade

SD Card Update

If you are using an SD card for the very first time - make sure it is formatted correctly (FAT16), or it will not function with SmartFade.

- Step 1: Obtain the software update file **SMRTFADE.SRC** from the download section of the ETC Web site: www.etcconnect.com
- Step 2: Copy the **SMRTFADE.SRC** file to the root directory of the SD card. DO NOT RENAME THE FILE!
- Step 3: Start the console in test mode. This is done by holding down the **MENU** button and pressing once on **ON**.



The unit will enter self-test mode. Press **MENU** for each of the tests until the memory test has completed. At the end of the memory test the display will prompt:

Firmware Upgrade
Are you sure? [No]

- Step 4: Insert the SD card into the console.
- Step 5: Turn the encoder to select **YES** and press **MENU**. The update will start and the console will boot into the new updated software after the process is complete.



Note:

If you have accidentally initiated a software update, you can exit without making any changes by unplugging the console.

USB Update

To update with USB you need a **PC** running the Windows operating system (Windows 98, Windows 2000, Windows XP, Vista or Windows 7 32-bit.).

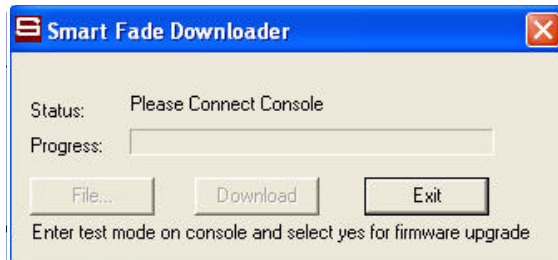
- Step 1: Obtain the software update file **SMRTFADE.SRC** and the USB Download application **SFDownloader.exe** from the download section of the ETC Web site:

ETC Release Note:

SmartFade v3.0.2 Software

www.etcconnect.com

- Step 6: Connect a USB cable between the SmartFade and the PC. The USB cable must have Type A and Type B connectors. Make sure you have backed up any show data you want to keep to the SD card before proceeding. Show data will be lost and cannot be recovered.
- Step 7: Double-click on the **SFDownloader.exe** application you downloaded from the ETC Web site. You should get this display.



- Step 8: Start the console in test mode. This is done by holding down the **MENU** button and pressing once on **ON**.



The unit will enter self-test mode. Press **MENU** for each of the tests until the memory test has completed. At the end of the memory test the display will prompt:

Firmware Upgrade
Are you sure? [No]

- Step 9: Once the connection with the console is recognized, the status information will display the Bootloader Version, and then "Please Load Firmware File". The FILE button will be displayed with solid text.



Click **FILE** and select the **SMRTFADE.SRC** file.

- Step 10: Now the DOWNLOAD button will be displayed with a solid text.



Click on **DOWNLOAD** to start downloading. The progress bar will begin to move. When the download is complete, the console will boot into the new updated software.

Issues Corrected in v3.0.2

RND 0017747 SmartSoft with SmartFade: Changing time or text for a direct cue that has been edited causes the cue to lose the changes

Known Issues Remaining in v3.0.2

RND 0000406 Tap BPM on seq can force seq to stay on until cleared, fader level is overridden.
RND 0000330 GO misbehaves in NEXT mode if paused and then resumed
RND 0000292 2-scene: after selftest/mem erase, x-fader position not checked